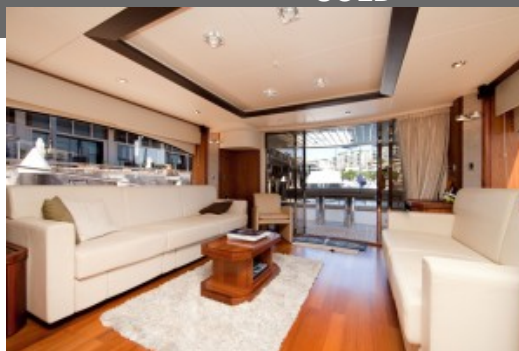




2009 Sunseeker Manhattan 70

SOLD

Ray White Marine



Specifications

Boat Details

Price	SOLD	Boat Brand	Sunseeker
Model	MANHATTAN 70	Length	21.34
Year	2010	Category	Motor Yachts
Hull Style	Single	Hull Type	GRP
Power Type	Power	Stock Number	0
Condition	Used	State	New South Wales
Suburb	PYRMONT	Engine Make	MAN

Disclaimer

Our company offers the details of this vessel in good faith but cannot guarantee or warrant the accuracy of this information nor warrant the condition of the vessel. A buyer should instruct his agents and/or surveyors to investigate such details buyer desires validated. This vessel is offered subject to prior sale, price change or withdrawal without notice.

Description

Near new Manhattan 70 with all Sunseeker features & optimised by Owner for extended cruising, 2009 model, delivered Feb 2010.

Immaculate condition, crew maintained, nothing to spend.

Man V12 1360hp engines with Twin Disc gearboxes

Kolher 27kw & Kolher 20kw generators

Hydraulic Side-Power bow & stern thrusters

Indromar 185 lph & 120lp desal

upgraded anchor system

tropical air conditioning

Teak decking all around

extra storage

Bezenzoni helm chairs

wine cooler & extra

fridge in Saloon

custom freezers & bar unit in flybridge

extra 1200 litres of fuel

upgraded Raymarine electronics package

Tracvision M9 satcom & sat TV with integrated Bose Lifestyle sound system & upgraded TV system

Satin finish Black American Walnut & Connollyleather interior Swift 5.50 RIB with Suzuki 90hp 4 stroke

Bauer dive compressor & tank racks

custom stainless tubing enclosed flybridge

Sunbrella exterior cushions

all covers, safety gear

ropes etc

& much more.

Will deliver anywhere in Aus.

Disclaimer: We have, in preparing this information, used our best endeavours to ensure that the information contained therein is true and accurate, but accept no responsibility and disclaim all liability in respect of any errors, inaccuracies or misstatements contained herein.

Parties interested in any Ray White Marine services and/or products should make their own inquiries to verify the information contained herein.

Features

Water (Potable) Capacity (l)	1200
Hull Construction Material	GRP
Hull Type	Single
Country Origin	United Kingdom
Length (feet)	73' 2

Disclaimer

Our company offers the details of this vessel in good faith but cannot guarantee or warrant the accuracy of this information nor warrant the condition of the vessel. A buyer should instruct his agents and/or surveyors to investigate such details buyer desires validated. This vessel is offered subject to prior sale, price change or withdrawal without notice.

Length (m)	21.34
Beam/Width (feet)	18' 7
Beam/Width (m)	5.67
Draft (m)	1.7
Number Of Engines	2
Horse Power (hp)	1360
Generator	Kolher 27kw & Kolher 20kw generators
Number of Batteries	8
Fuel Type	Diesel
Fuel Tank Capacity (L)	4954
Bow Thruster	Yes
Accommodation Notes	VIP forward stateroom with ensuite,Aft master stateroom with ensuite shower room, Starboard guest cabin with ensuite, Port guest cabin with ensuite, Crew cabin
Number of Berths	8 guests + 2 crew
Entertainment and Appliances Notes	Tracvision M9 satcom & sat TV with integratedBose Lifestyle sound system & upgraded TV system
GPS	upgraded Raymarine electronics package

Engine Details

Engine Make	MAN
Horse Power	1360
Fuel Type	Diesel
Fuel Capacity	4954

Disclaimer

Our company offers the details of this vessel in good faith but cannot guarantee or warrant the accuracy of this information nor warrant the condition of the vessel. A buyer should instruct his agents and/or surveyors to investigate such details buyer desires validated. This vessel is offered subject to prior sale, price change or withdrawal without notice.